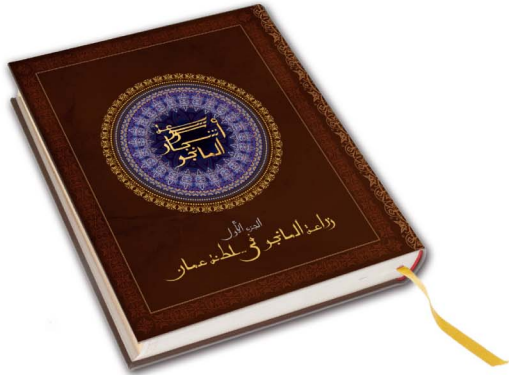




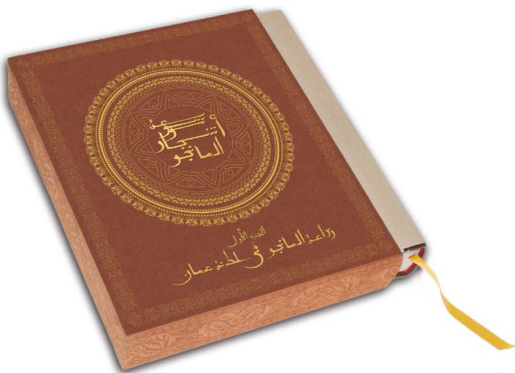
ROYAL EDN SLIPCASE

Full buffalo calf leather (front, back, spine). On top and bottom: Alcantara. Embossing around the sides (continuous arabesque). Center (front): strong leather garland with luxury paper inlay. Round arabesque printed, silkscreened and foiled. Embossings. Central lettering with embossing and goldfoiling.



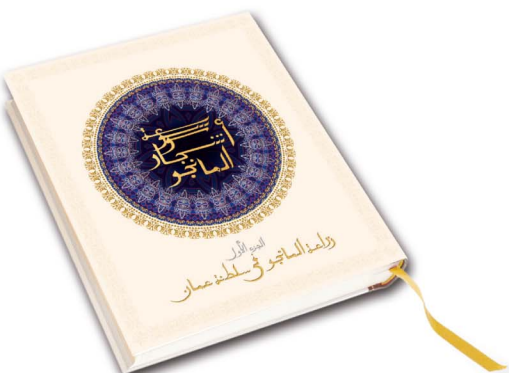
ROYAL EDN COVER

Full buffalo calf leather hardcover, rounded back. Per scoring paper inlay on front, foilings. Gilded on open side.



STANDARD EDN SLIPCASE

Lynel Alcantara (front, back, spine, top, bottom). Embossing around the sides (continuous arabesque). Center (front): goldfoiling.



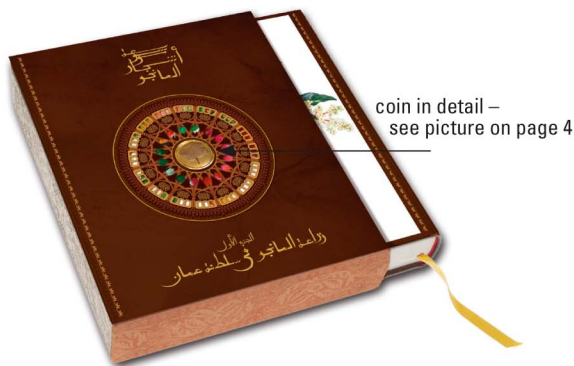
STANDARD EDN JACKET

DIEHOLE on hammered paper (Alezan), matt laminated inside (protection), goldfoiling and print.



STANDARD EDN COVER

Printing on kashgar-silk. Quarterbound in real buffalo leather. Goldfoiling.



coin in detail –
see picture on page 4

ROYAL EDN SLIPCASE

Full buffalo calf leather (front, back, spine). On top and bottom: dark Alcantara. Embossing around the sides (continuous arabesque). Front: Cast coated paper (aluminium <- metallic shine) printed with UV-colors. 2-color-foiling. Thermic embossing.



The arabesques on the sides are inspired by the designs of Oman hats

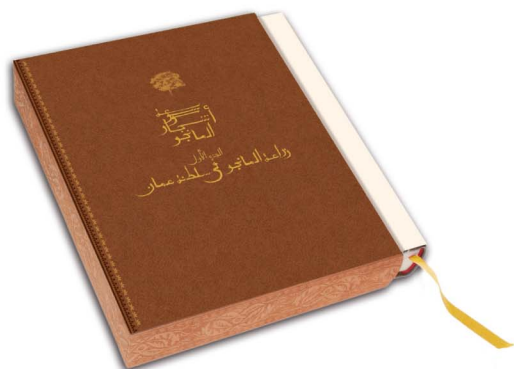


left: view to the cupola of the Great Mosque, Muscat. Right: leather garland on slipcase.



ROYAL EDN COVER

Full buffalo calf leather hardcover, rounded back. Per scoring cast coated paper (aluminium) inlay on front printed UV-colors. Foilings. Gilded on open side.



STANDARD EDN SLIPCASE

Lynel Alcantara (front, back, spine, top, bottom). Blind embossing around the sides (continuous arabesque). Front and back: thermic embossing. Goldfoiling.



STANDARD EDN JACKET

Cast coated paper (aluminium <- metallic shine) printed with UV-colors. 2-color-foiling. Or: print on hammered paper (Alezan), goldfoiling.



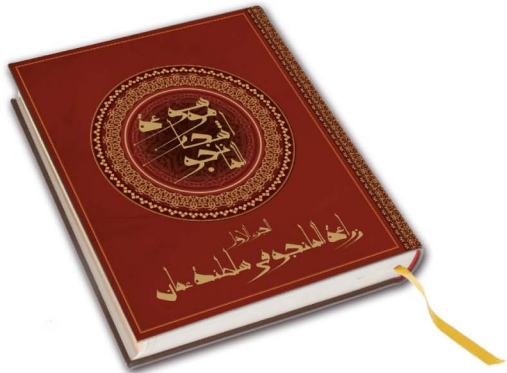
STANDARD EDN COVER

Printing on kashgar-silk. Quarterbound in real buffalo leather. Goldfoiling.



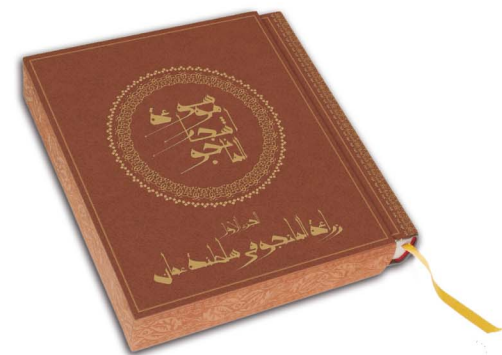
ROYAL EDN SLIPCASE

Full buffalo calf leather, tinted dark red (front, back, spine). On top and bottom: Alcantara. Embossing around the sides (continuous arabesque). Center (front): strong leather garland with luxury paper inlay. Round arabesque printed, silkscreened and foiled. Embossings. Central lettering with embossing and goldfoiling. The full front will be relief-embossed.



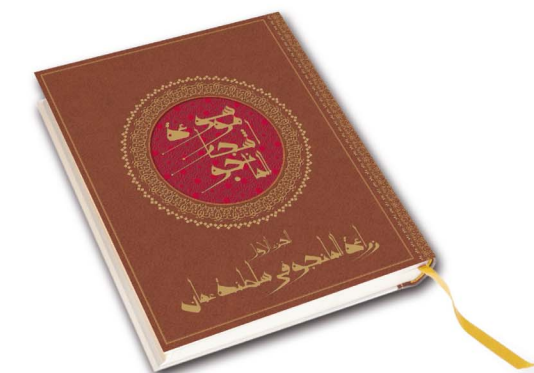
ROYAL EDN COVER

Full buffalo calf leather hardcover, rounded back. Per scoring round paper inlay on front, foilings. Gilded on open side.



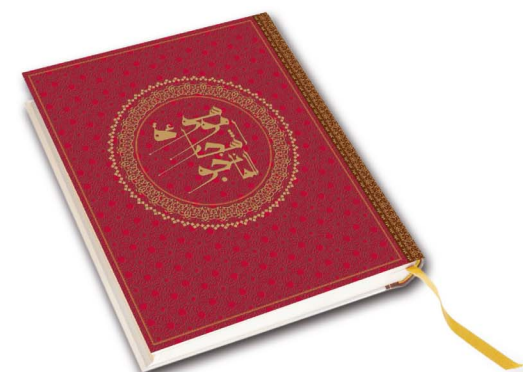
STANDARD EDN SLIPCASE

Lynel Alcantara (front, back, spine, top, bottom). Embossing around the sides (continuous arabesque). Center (front): goldfoiling.



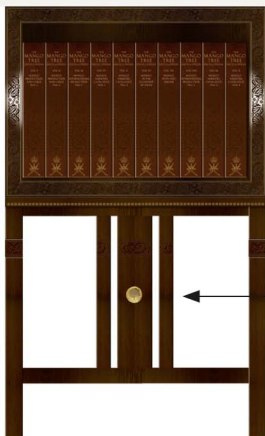
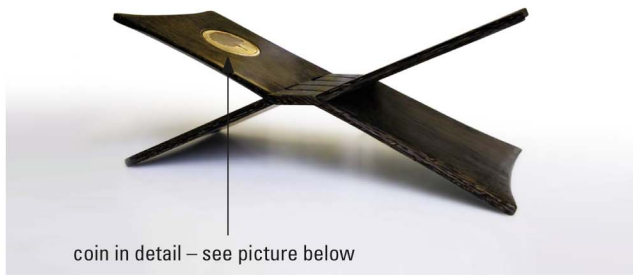
STANDARD EDN JACKET

DIEHOLE on hammered paper (Alezan), matt laminated inside (protection), goldfoiling and print.



STANDARD EDN COVER

Printing on kashgar-silk. Quarterbound in real buffalo leather. Goldfoiling.



EXTRA: BOOK STAND

Planned: cut from white mango wood (Vietnam), hand-carved in Bali, with inlay, gold- or silver threads inlayed or gold-effects (paint). Or inlay of gold medal. ((if desired: prototype))

EXTRA: REAL 24 K GOLDMEDAL

First submitted design: glued in the center of the garland.
Base 24 karat gold, mango-tree-inlay hand-carved in copper. Invisible varnish on top for protection.
Size: 2.5 x 2.5 cms

TRANSPORT BOXES

Dark strong board. Printed on one side. Protects the books. Standard transportation boxes.

EXTRA: GIFT BOX

1-book-giftbox in Lynel Alcantara with mango tree coin on top. Silk lining. Bookstand hidden underneath the book or on top of the clamshell.
Also possible: giftbox for two books. Bookstand underneath the book or on top of the shell. Silk lining.

EXTRA: CABINETT

If desired, a prototype would have to be made: a cabinett for the entire encyclopedia with a stand. To be confirmed: white mango wood with hand-carving, gold inlays and hand painting. Arabesques fitting for the designs of the Royal Editions. Optional: a fold out book stand on top, fully retractable. Height: to be confirmed.